

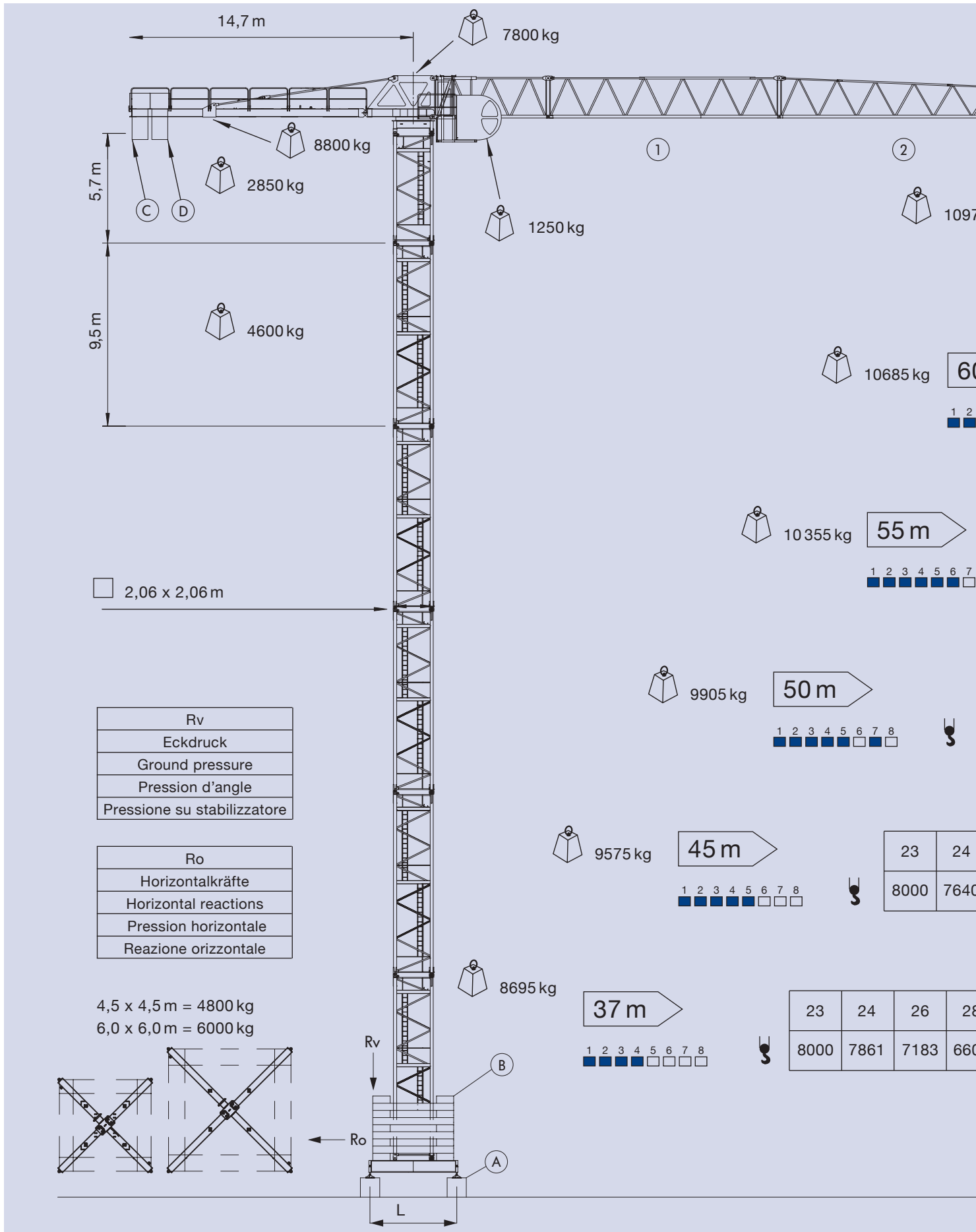
Turmdrehkran

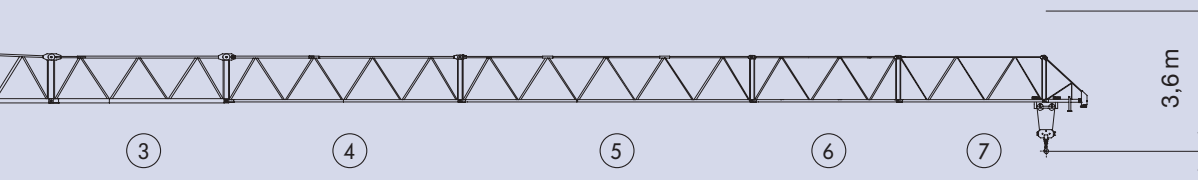
Tower crane / Grue à tour / Gru a torre

EURO SSG 160



EURO SSG 160





75 kg

65 m

17	25	35	40	45	50	55	60	65	m
8000	5425	3649	3102	2680	2343	2069	1842	1650	kg

1 2 3 4 5 6 7 8

Hook icon

0 m

18	21	25	35	40	45	50	55	60	m
8000	7099	5814	3923	3341	2891	2534	2242	2000	kg

3 4 5 6 7 8

Hook icon

19	21	25	30	35	40	45	50	55	m
8000	7526	6169	4999	4174	3560	3085	2708	2400	kg

8

Hook icon

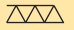
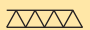


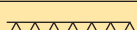
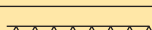




21	23	25	30	35	40	43	45	50	m
8000	7437	6766	5493	4595	3927	3603	3411	3000	kg

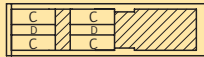






25	30	33	35	38	40	45	m
7296	5932	5318	4969	4516	4253	3700	kg

30	32	34	36	37	m
6107	5673	5292	4955	4800	kg

- Hakenhöhe
Height under hook
Hauteur s/crochet
Altezza al gancio
- 55 m
 - 50 m
 - 45 m
 - 40 m
 - 35 m
 - 30 m

EURO SSG 160

Tragkraft Capacity Charge Pesi	kg	8000	4800	3700	3000	2400	2000	1650
Ausladung/Radius/Portée/Sbraccio								
	37,0 m	m	24	37				
	45,0 m	m	23		45			
	50,0 m	m	22			50		
	55,0 m	m	20				55	
	60,0 m	m	19					60
	65,0 m	m	18					65
 FU-Steuerung/Inverter P = 45 kW					8 m/min 25 m/min 50 m/min 75 m/min 100 m/min 120 m/min		8000 kg 6000 kg 3500 kg 2000 kg 1500 kg 400 kg	
 FU-Steuerung/Inverter P = 4 kW					8-25-60-100 m/min			
 FU-Steuerung/Inverter P = 2 x 4,2 kW					0,1-0,3-0,5-0,7 1/min			
Spannung Voltage Voltage Voltaggio					400 V - 50 Hz			
Anschlusswert Total motor output Puissance totale Potenza elettrica complessiva					57 kW - Absicherung 125 A			

Ausleger Radius Portée Sbraccio	Gegengewichte Counter-jib ballast Contre-poids Contrappeso			
	C = 4000 kg	D = 1500 kg	Total	
65 m	4 x C	2 x D	19000 kg	
60 m	4 x C	1 x D	17500 kg	
55 m	4 x C	1 x D	17500 kg	
50 m	3 x C	2 x D	15000 kg	
45 m	3 x C	1 x D	13500 kg	
37 m	2 x C	2 x D	11000 kg	

EURO SSG 160

Abstützung Base dimension Ecartement de voie Scartamento				L = 4,5 x 4,5 m				Stationär Stationary Sur pieds de scellement Stazionaria	
Hakenhöhe ¹ Height under hook Hauteur s/crochet Altezza al gancio	Grundballast Central ballast Lest de base Zavorra di base					Kräfte Reactions Pression d'angle Reazioni			
H	A			B	A+B	Rv (daN)	Ro (daN)		
45 m	4	3,4 t	13,6 t	104 t	117,6 t	95311	21069		
41,2 m	4	3,4 t	13,6 t	88 t	101,6 t	81708	19055		
39,3 m	4	3,4 t	13,6 t	80 t	93,6 t	79447	17765		
35,5 m	4	3,4 t	13,6 t	72 t	85,6 t	74931	16653		
31,7 m	4	3,4 t	13,6 t	64 t	77,6 t	70331	14943		
29,8 m	4	3,4 t	13,6 t	56 t	69,6 t	66986	14253		
22,2 m	4	3,4 t	13,6 t	32 t	45,6 t	56188	10620		

Abstützung Base dimension Ecartement de voie Scartamento				L = 6,0 x 6,0 m				Stationär Stationary Sur pieds de scellement Stazionaria	
Hakenhöhe ¹ Height under hook Hauteur s/crochet Altezza al gancio	Grundballast Central ballast Lest de base Zavorra di base					Kräfte Reactions Pression d'angle Reazioni			
H	A			B	A+B	Rv (daN)	Ro (daN)		
54,5 m	4	3,4 t	13,6 t	88 t	101,6 t	94118	19152		
50,7 m	4	3,4 t	13,6 t	80 t	93,6 t	84700	18092		
45 m	4	3,4 t	13,6 t	64 t	77,6 t	70188	15976		
39,3 m	4	3,4 t	13,6 t	48 t	61,6 t	61785	14324		
35,5 m	4	3,4 t	13,6 t	40 t	53,6 t	57819	13509		
31,7 m	4	3,4 t	13,6 t	32 t	45,6 t	53841	11831		
26 m	4	3,4 t	13,6 t	16 t	29,6 t	46992	10218		

¹ Weitere Turmkonfigurationen nach Absprache möglich.

¹ Other tower configurations are available upon request.

¹ Autres configurations de tour possible sur demande.

¹ Ulteriori configurazioni di torre disponibili su richiesta.

Standorte Schweiz:

Conducta AG
Stegackerstrasse 6
CH-8409 Winterthur
Telefon +41 (0)52 234 51 51
info@conducta.ch

Conducta AG
Riedbachstrasse 212
CH-3020 Bern
Telefon +41 (0)31 858 51 00
bern@conducta.ch

Conducta SA
Ch. de la Clopette 30
CH-1040 Echallens
Téléphone +41 (0)21 886 34 00
contact@conducta.ch

Conducta AG
Industriestrasse 4
CH-7203 Trimmis
Telefon +41 (0)81 322 53 33
trimmis@conducta.ch

Werner Fercher AG
CH-Lalden VS
Telefon +41 (0)27 946 40 21

Weitere Standorte finden Sie unter: www.conducta.ch

Standort Deutschland:

Conducta GmbH
Breitenbachstrasse 1
D-82538 Geretsried 1
Telefon +49 (0)81 71 2196-0
info@conducta.de

Standort Italien:

Conducta S.R.L.
Macchine Edili
Via Liguria 11
I-36015 Schio (VI)
Telefono +39 (0)445 576 229